

Anzahl der Silben bestimmen

A matching exercise for children. It features ten animal illustrations: a pig, a cow, a hamster, a mouse, a hedgehog, a bee, a sheep, a frog, a rabbit, and a tiger. In the center are two hand-clapping symbols: a red circle with one hand and a red oval with two hands. Blue lines connect the bee to the one-hand symbol and the frog to the two-hand symbol.



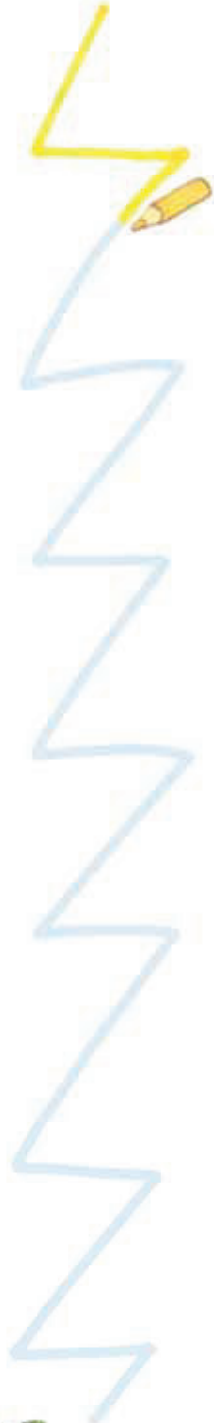


Fehler finden





Linien nachspuren



# Zusammenhänge herstellen

